

OUR SERVICES



Consulting Services

GEC's consultants are former state staff each with more than 20 years of experience supporting primacy agencies with drinking water program implementation and data management. Examples of projects include data cleanup and data quality reviews, data migration from legacy data systems to SDWIS, support for CMDP, onboarding of labs for electronic data submittals, meeting facilitation, and training on SDWIS, CMDP, and federal drinking water regulations.



GEC Software Solutions

Our off-the-shelf applications provide time-saving and helpful solutions that help assure water systems and operators comply with the SDWA and state regulations. Our apps integrate with state data management systems, including SDWIS. GEC also customizes solutions for our customers to meet their business needs.

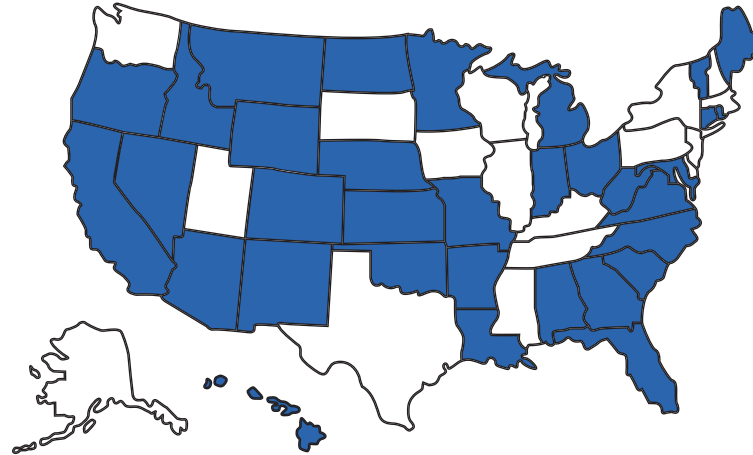


Hosting Services

GEC hosts client databases and applications and meets top notch Soc 2 Type 2 security standards within its Fed Ramp, NIST 800-53 R4 compliant Microsoft Azure government Cloud, plus supports access for clients through secure VPN connections.


ABOUT US


More than 20 years helping SDWA Primacy Agencies to save time and resources through expert consulting and software solutions.



GEC experience: States, Regions, and Territories helped since 2000

GET IN TOUCH

 (480) 827-9827

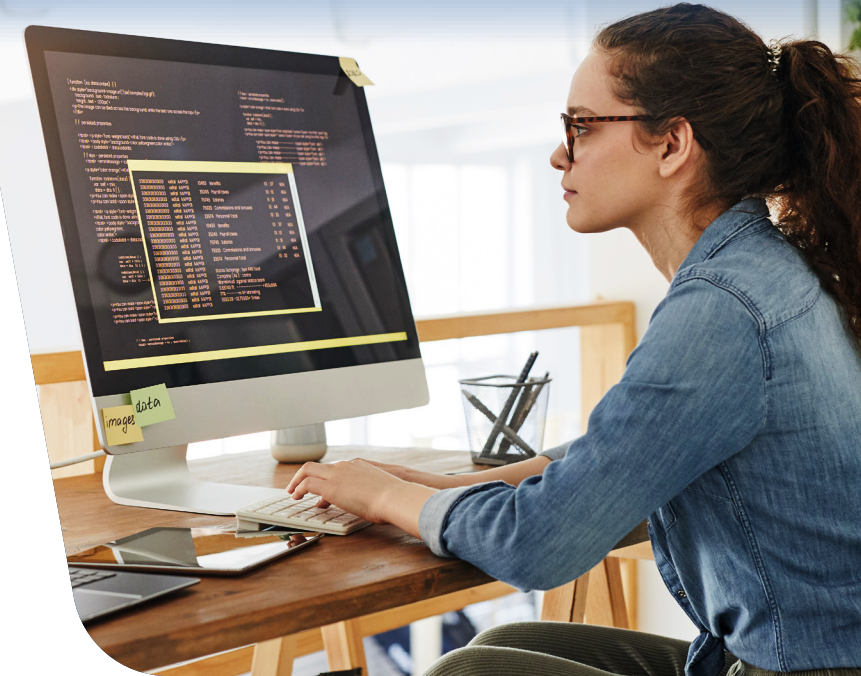
 info@1gec.com

 1gec.com



GEC

GLOBAL
ENVIRONMENTAL
CONSULTING



CONSULTING AND SOFTWARE SOLUTIONS

GEC SOFTWARE SOLUTIONS



Electronic site visit tool which speeds up completion of site visits, sanitary surveys, assessments, or other inspections from your mobile device or from the web. Allows collaboration between water system staff and primacy agency staff, with the option to migrate water system inventory information to SDWIS.



The Submittals application enables water systems to submit files and reports to the state and has three add-on features to capture data and update SDWIS.

- Lead Service Line Inventory (LSLI):** Captures detailed service line data (as required by the state) that is aggregated to determine service line lead category, % lines identified, and any other data needed for the Lead and Copper Rule Revisions.
- Inventory:** Using simple admin tools, states can determine which inventory elements can be updated by water systems for submittal to the state.
- Monthly Operating Reports (MORs):** Captures detailed data from monthly operating reports submitted by water systems.



Provides easily accessible SDWIS data for the public, regulated community, and primacy agency staff. Developed to provide primacy agencies with flexibility to determine what data are visible to the public. Users can search for data across water systems or for a single water system, e.g., monitoring schedules, sampling data, and violations. Allows data extracts to Microsoft Excel.



With more advanced functionality than Microsoft Access, GEC's Reports, Evaluations, Compliance, and Processing application has four add-on features that use web services to extract information from databases and present it in useful formats.

- Reports:** Generates custom reports, outputs, and letters to help primacy agencies quickly review water system data and compliance information.
- Dashboard:** Displays key compliance information for all water systems that needs to be addressed by the compliance management team immediately, daily, weekly, monthly, or other intervals. Helps rule managers, compliance and enforcement staff, and supervisors focus using grids, metrics, and graphs on an uncluttered dashboard.
- CCR:** Creates federally-compliant Consumer Confidence Reports, plus allows for customized appearance, data, and content based on state requirements (and preference). Individual CCRs in Word can be further customized before sending to water systems.
- PWS Status:** Draws from multiple information sources to conduct a health status check that indicates whether a water system complies with regulations or state-established criteria, e.g., for a loan, target for technical assistance, or permit.



Manages all aspects of a primacy agency's enforcement strategy, including compliance schedule activities, agency workflows, calendar events, timelines, and violations to help water systems return to compliance. Sends notifications, reminders, and alerts to internal collaborators, and notifies water systems of upcoming events. Produces customized reports and letters.



Optimizes the operator certification process to track progress and qualifications and offers communication tools for sharing information. Operators enter information through a portal and states review and approve key information. Certification can be tracked by operator or by facility. Cert Tracker can integrate through web services with other systems, such as accounting or payment services.



Helps primacy agency staff manage water system engineering projects. Tracks project progress, costs, contacts, and generates letters and reports.



Calculates fees, generates invoices, integrates with payment services, tracks payments, and communicates with parties that are required to pay fees to the state.



Validates electronically submitted lab samples and results to ensure data submitted meet state requirements before upload to SDWIS. Validator presents a broad menu of data checks that states can enable to suit their need.

